

F

E

D

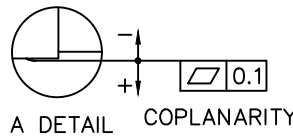
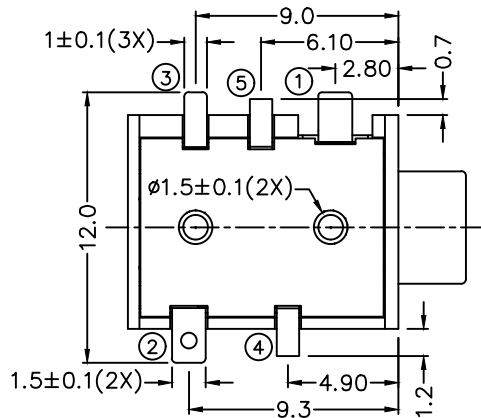
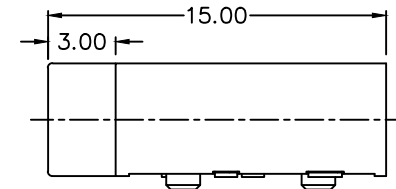
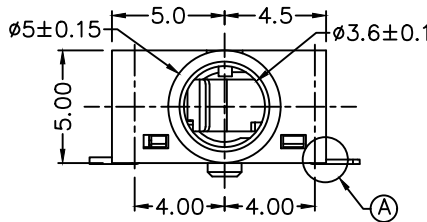
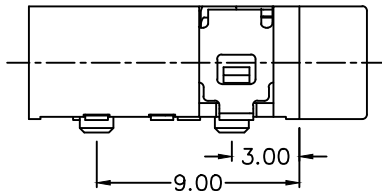
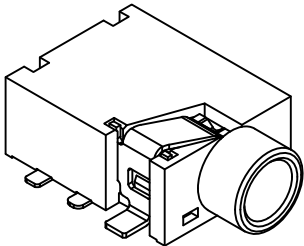
C

B

A

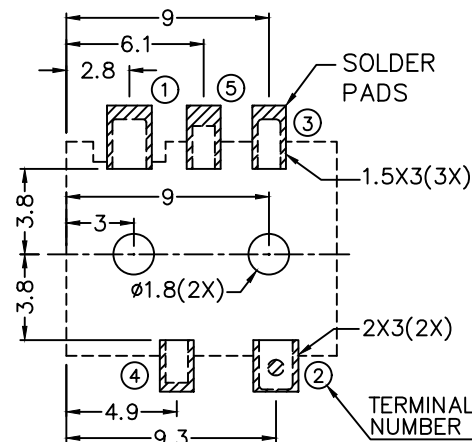
ZONE	SYMBOL	REVISION	APPROVAL	DATE

**RoHS**  
Compliant

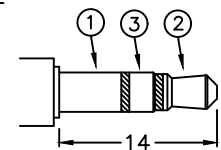


**\*MATERIAL**

- TERMINAL 1 : COPPER ALLOY
- TERMINAL 2 : COPPER ALLOY
- TERMINAL 3 : COPPER ALLOY
- TERMINAL 4 : BRASS
- TERMINAL 5 : BRASS
- HOUSING : HIGH TEMP. PLASTIC
- COVER : HIGH TEMP. PLASTIC



RECOMMENDED PCB LAYOUT  
TOLERANCE: ±0.05  
(TOP VIEW)



RECOMMENDED  
ϕ3.5 MATING PLUG

MODEL NO.	LSH-3675D	LSH-3674AD	LSH-3674BD	LSH-3673D	LSH-3673AD
SCHEMATIC					

**LINKPLEX TECHNOLOGY LIMITED**

DESIGN	H.L.TAN	DATE	23-7-2023	SCALE	3:1
DRAWING	H.Q.ZHOU	DATE	23-7-2023	MATERIAL	*
CHECK	T.Y.LI	DATE	23-7-2023	DWG. NO.	TZ\SH367D-A/1.0
APPROVAL		DATE	23-7-2023	SHEET	1/1

PART NAME	3.5mm SMD AUDIO JACK	TOLERANCE UNLESS	0±0.5	UNIT:	mm
PART NO.	LSH-367D	OTHERWISE SPECIFIED:	0.0±0.3 0.00±0.2		

F

E

D

C

B

A