

F

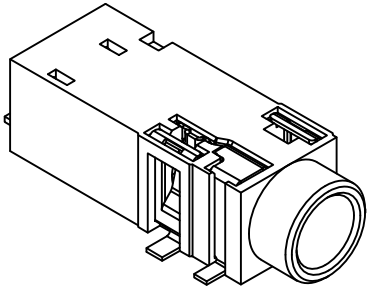
E

D

C

B

A

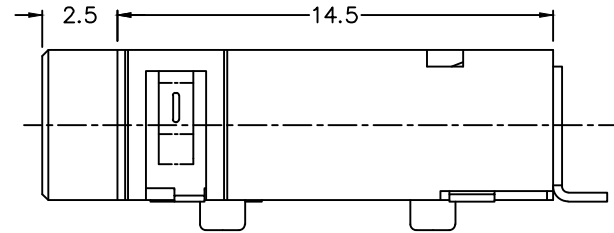
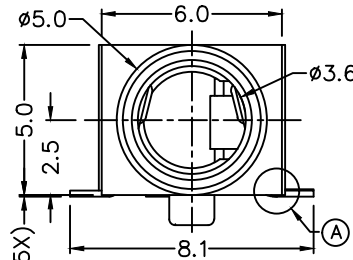
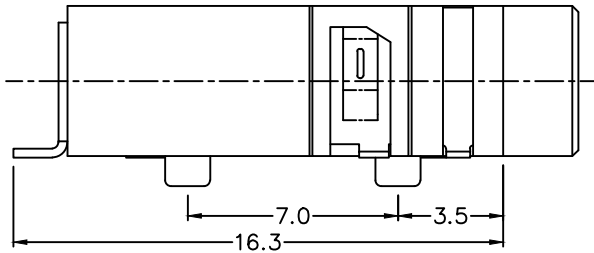


RoHS
Compliant

ZONE	SYMBOL	REVISION	APPROVAL	DATE

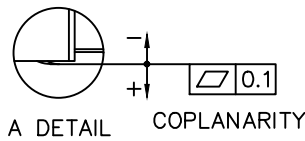
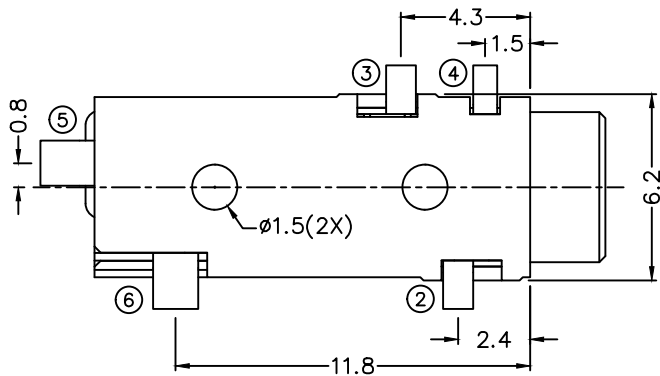
1

1



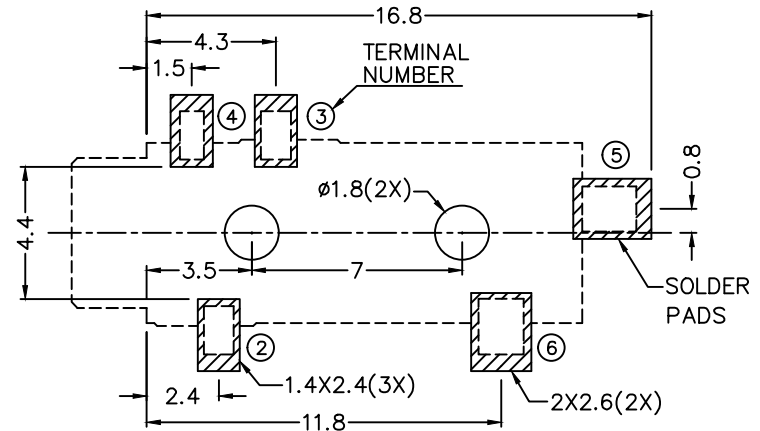
2

2

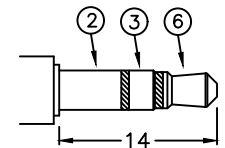


*** MATERIAL**

- TERMINAL 2 : COPPER ALLOY
- TERMINAL 3 : COPPER ALLOY
- TERMINAL 4 : COPPER ALLOY
- TERMINAL 5 : COPPER ALLOY
- TERMINAL 6 : COPPER ALLOY
- HOUSING : HIGH TEMP. PLASTIC



RECOMMENDED PCB LAYOUT
TOLERANCE: ±0.05
(TOP VIEW)



RECOMMENDED
ø3.5 MATING PLUG

3

3

4

4

MODEL NO.	LSH-3695	LSH-3694A	LSH-3694B	LSH-3693	LSH-3693A
SCHEMATIC					

LINKPLEX TECHNOLOGY LIMITED

PART NAME: 3.5mm SMD AUDIO JACK
PART NO.: LSH-369

TOLERANCE UNLESS OTHERWISE SPECIFIED:
0±0.5
0.0±0.3
0.00±0.2

UNIT: mm

DESIGN	H.L.TAN	DATE	23-7-2023	SCALE	4:1
DRAWING	H.Q.ZHOU	DATE	23-7-2023	MATERIAL	*
CHECK	T.Y.LI	DATE	23-7-2023	DWG. NO.	TZ\SH369-A/1.0
APPROVAL		DATE	23-7-2023	SHEET	1/1

F

E

D

C

B

A