

F

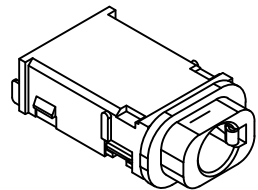
E

D

C

B

A

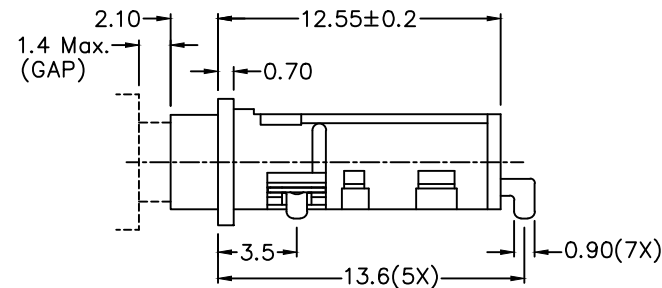
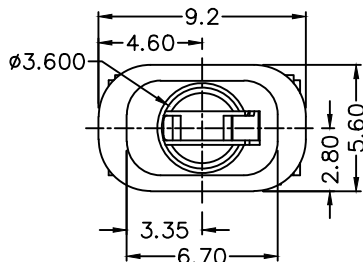
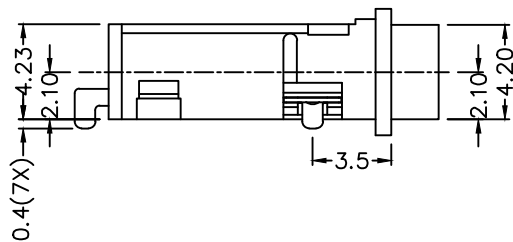


RoHS Compliant

ZONE	SYMBOL	REVISION	APPROVAL	DATE
		ADD RECOMMENDED WATERPROOF GASKET DIAGRAM	H.Q.ZHOU	7-7-2024

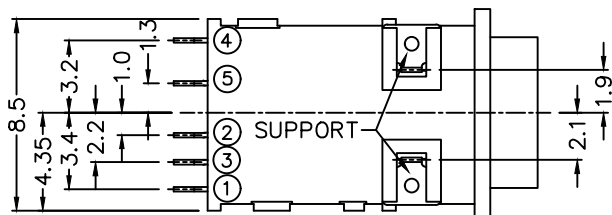
1

1



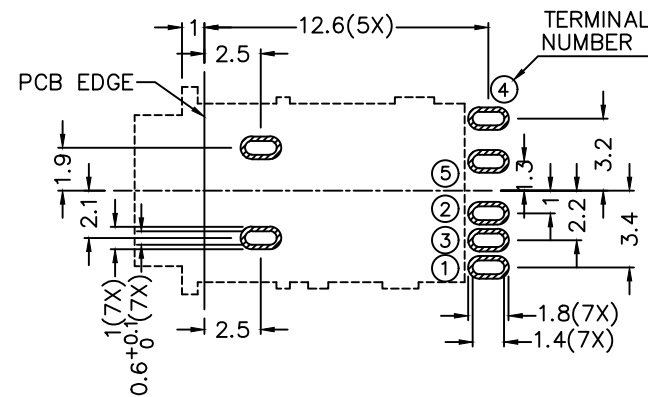
2

2



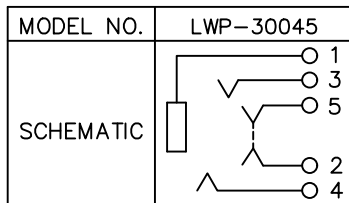
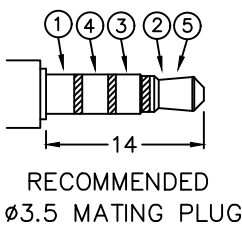
* MATERIAL

- TERMINAL 1 : COPPER ALLOY
- TERMINAL 2 : COPPER ALLOY
- TERMINAL 3 : COPPER ALLOY
- TERMINAL 4 : COPPER ALLOY
- TERMINAL 5 : COPPER ALLOY
- SUPPORT : BRASS
- HOUSING : HIGH TEMP. PLASTIC
- COVER : HIGH TEMP. PLASTIC



3

3



RECOMMENDED PCB LAYOUT TOLERANCE: ±0.05 (TOP VIEW)

4

4

LINKPLEX TECHNOLOGY LIMITED

DESIGN	H.L.TAN	DATE	3-2-2013	SCALE	3:1
DRAWING	Y.J.GUO	DATE	7-7-2024	MATERIAL	*
CHECK	T.Y.LI	DATE	7-7-2024	DWG. NO.	TZ\WP3004-A/3.1
APPROVAL	H.Q.ZHOU	DATE	7-7-2024	SHEET	1/2

PART NAME	WATERPROOF 3.5MM AUDIO JACK	TOLERANCE UNLESS	0.0±0.2	UNIT:	mm
PART NO.	LWP-3004	OTHERWISE SPECIFIED:	0.00±0.1 0.000±0.05		

F

E

D

C

B

A

F

E

D

C

B

A

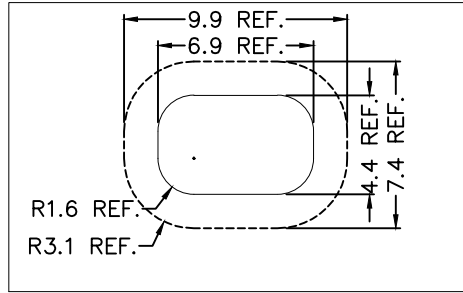


RoHS
Compliant

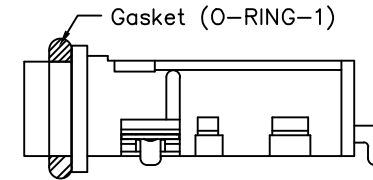
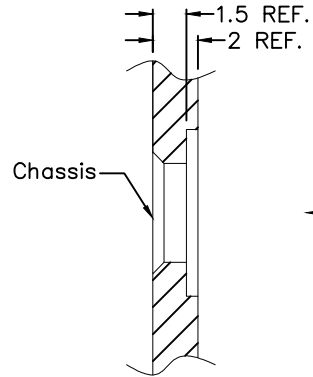
ZONE	SYMBOL	REVISION	APPROVAL	DATE

1

1



Top View



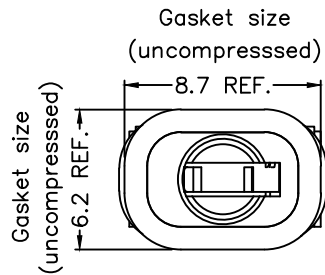
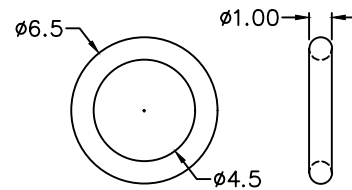
Gasket (O-RING-1)

2

2

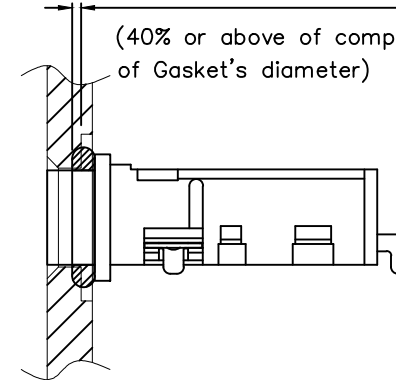
3

3

Gasket size
(uncompressed)Gasket size
(uncompressed)

* Recommended Waterproof Gasket

Gasket Part No.: O-RING-1

Interference gap between chassis
and Gasket is 0.4 min(40% or above of compression
of Gasket's diameter)

After assembling on chassis

4

4



LINKPLEX TECHNOLOGY LIMITED

DESIGN	H.L.TAN	DATE	3-2-2013	SCALE	3:1
DRAWING	Y.J.GUO	DATE	7-7-2024	MATERIAL	
CHECK	T.Y.LI	DATE	7-7-2024	DWG. NO.	TZ\WP3004-A/3.1
APPROVAL	H.Q.ZHOU	DATE	7-7-2024	SHEET	2/2

PART NAME WATERPROOF 3.5MM AUDIO JACK

TOLERANCE UNLESS 0.0±0.2

UNIT: mm



PART NO. LWP-3004

OTHERWISE SPECIFIED: 0.00±0.1
0.000±0.05

F

E

D

C

B

A