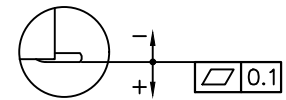
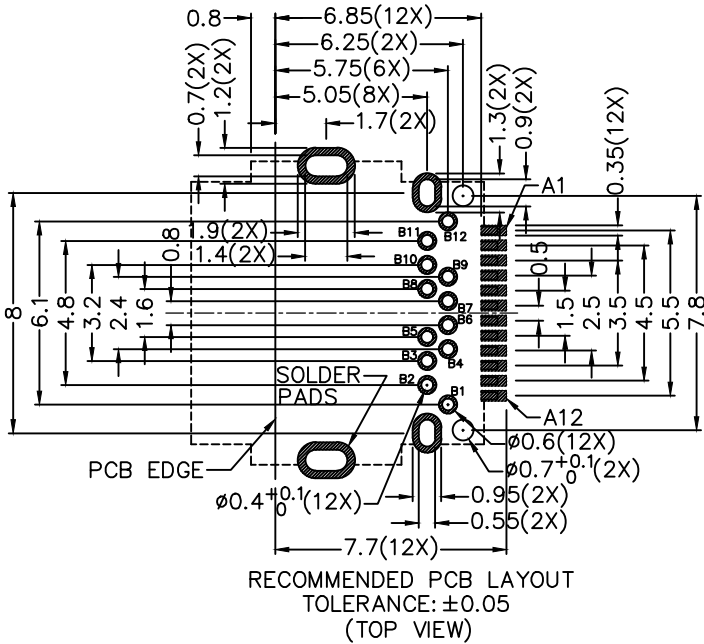
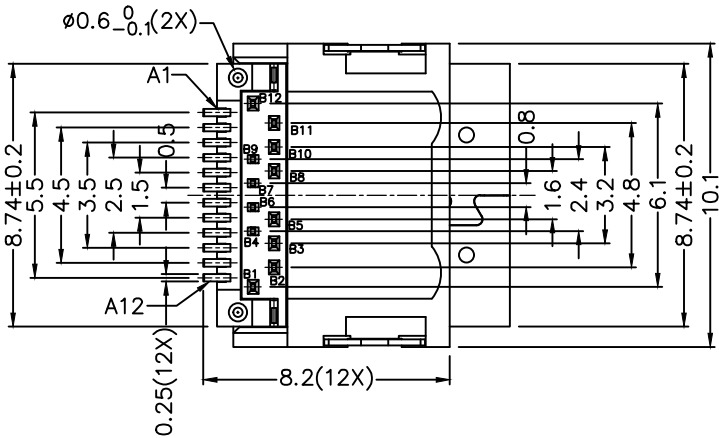
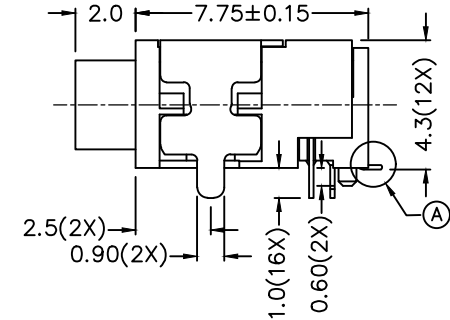
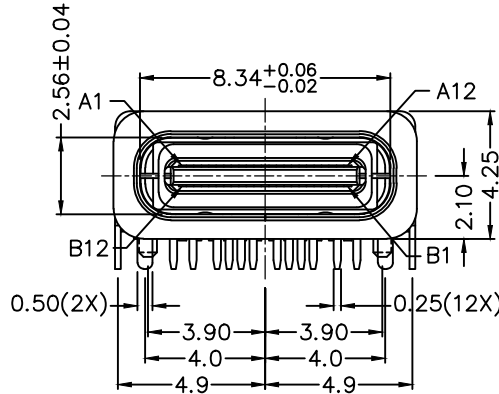
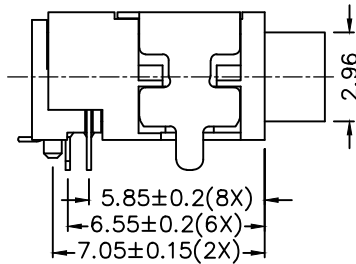
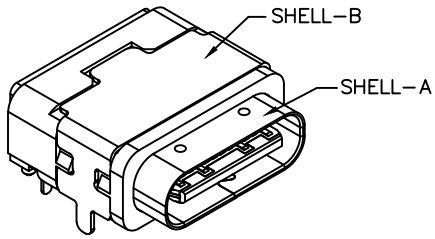


C		B		A	
ZONE	SYMBOL	REVISION		APPROVAL	DATE
		ADD RECOMMENDED WATERPROOF GASKET DIAGRAM		H.Q.ZHOU	7-7-2024



RoHS Compliant



A DETAIL COPLANARITY

PIN ASSIGNMENT (FRONT VIEW)

PIN NO.	A1	A2	A3	A4	A5	A6	A7	A8	A9	A10	A11	A12
	GND	TX1+	TX1-	Vbus	CC1	D+	D-	SBU1	Vbus	RX2-	RX2+	GND
PIN NO.	B12	B11	B10	B9	B8	B7	B6	B5	B4	B3	B2	B1
	GND	RX1+	RX1-	Vbus	SBU2	D-	D+	CC2	Vbus	TX2-	TX2+	GND

DESCRIPTION	MATERIAL	PLATING
CONTACT	COPPER ALLOY	NICKEL(Ni) ON ALL AREA, GOLD FLASH ON CONTACT AND SOLDER AREA
SHELL-A	STAINLESS STEEL	NICKEL(Ni)
SHELL-B	BRASS	NICKEL(Ni)
INNER GROUND COVER SHELL	STAINLESS STEEL	
MIDDLE PLATE	STAINLESS STEEL	NICKEL(Ni)
INSULATOR	HIGH TEMP. PLASTIC	COLOR: BLACK
HOUSING	HIGH TEMP. PLASTIC	COLOR: BLACK

**LINKPLEX TECHNOLOGY LIMITED**

DESIGN	H.L.TAN	DATE	30-11-2018	SCALE	4:1
DRAWING	J.H.ZHOU	DATE	7-7-2024	MATERIAL	
CHECK	T.Y.LI	DATE	7-7-2024	DWG. NO.	TZ\WPC001D-A/2.1
APPROVAL	H.Q.ZHOU	DATE	7-7-2024	SHEET	1/2

PART NAME	WATERPROOF USB 3.2 TYPE-C (24 PIN)	TOLERANCE UNLESS	0.0±0.2 0.00±0.1	UNIT:	mm
PART NO.	LWP-C001D	OTHERWISE SPECIFIED:	0.000±0.05		

F

E

D

C

B

A

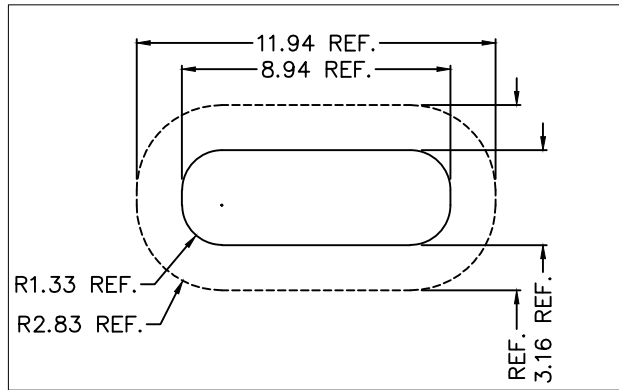


RoHS  
Compliant

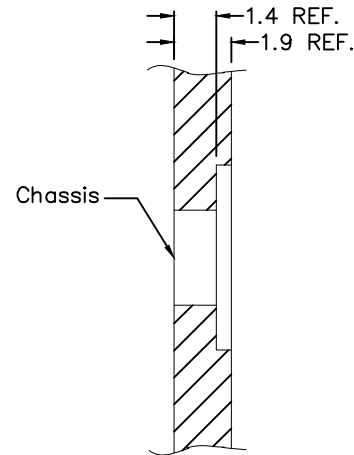
ZONE	SYMBOL	REVISION	APPROVAL	DATE

1

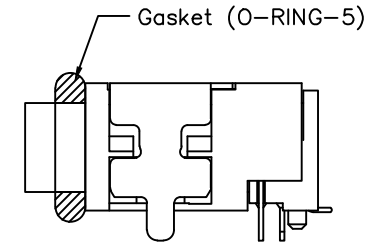
1



Top View



Chassis

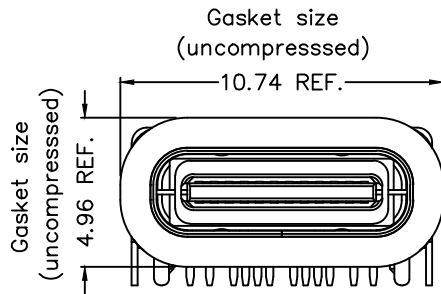
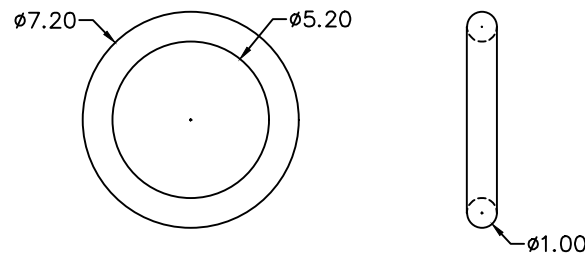


2

2

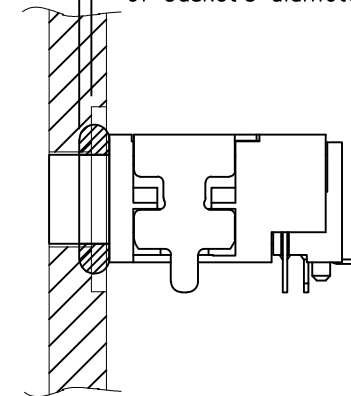
3

3

Gasket size  
(uncompressed)

\* Recommended Waterproof Gasket

Gasket Part No.: O-RING-5

Interference gap between chassis  
and Gasket is 0.4 min(40% or above of compression  
of Gasket's diameter)

After assembling on chassis

4

4



LINKPLEX TECHNOLOGY LIMITED

DESIGN	H.L.TAN	DATE	30-11-2018	SCALE	4:1
DRAWING	J.H.ZHOU	DATE	7-7-2024	MATERIAL	
CHECK	T.Y.LI	DATE	7-7-2024	DWG. NO.	TZ\WPC001D-A/2.1
APPROVAL	H.Q.ZHOU	DATE	7-7-2024	SHEET	2/2

PART NAME WATERPROOF USB 3.2 TYPE-C (24 PIN)

TOLERANCE UNLESS 0.0±0.2

UNIT: mm



PART NO. LWP-C001D

OTHERWISE SPECIFIED: 0.00±0.1  
0.000±0.05

F

E

D

C

B

A